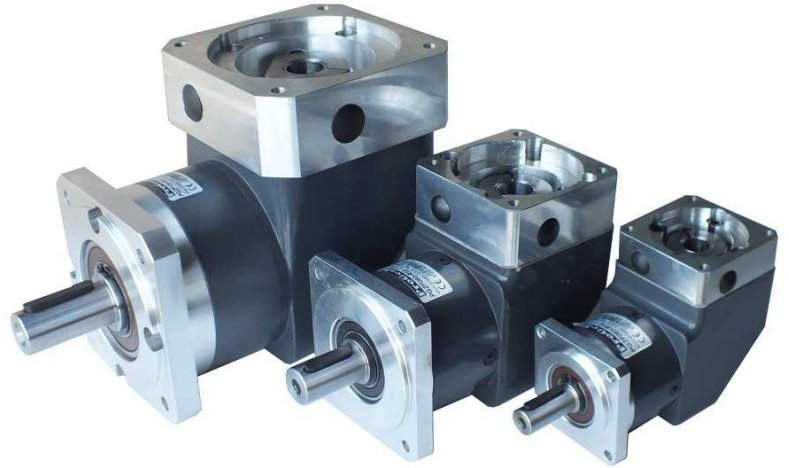


# PGZF Series

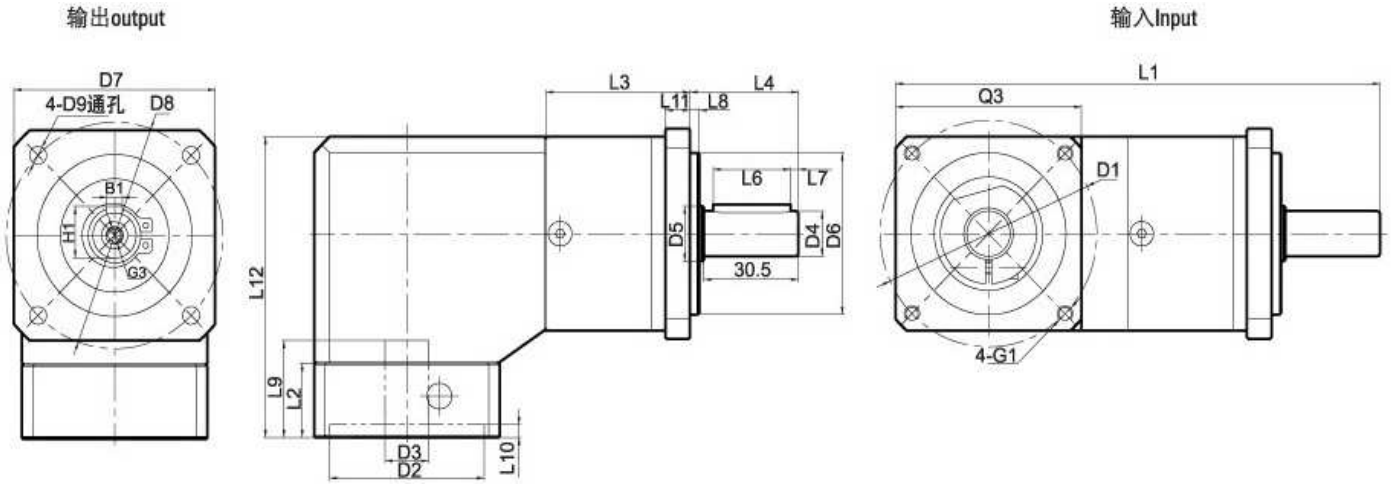
Right Angle Square Flange Output



## Technical Specifications

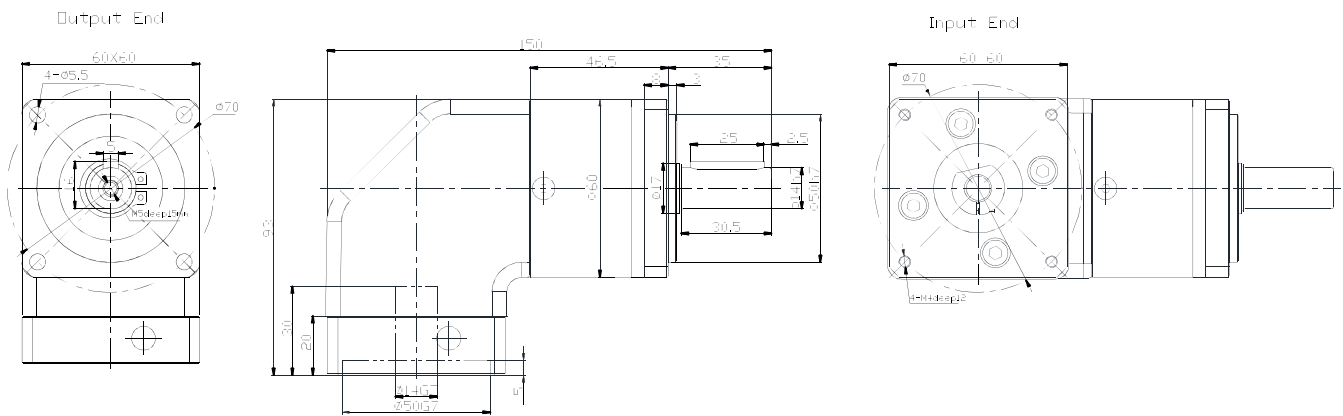
No. of Stage	1			2				3				
Gear Ratio	3	5	10	20	32	40	64	100	160	200	320	
Full Load Efficiency	% 94			% 92				%88				
Lifetime	30.000 hrs											
Instant Stop Torque	2 Times of Rated output torque											
Operating Temp.	-25 °C ~ +90 °C											
Safety Grade	IP54											
Lubrication Type	Lifetime Lubrication											
Mounting Type	Any											
Rated Admissible Torque ( Nm )	PGZF060	12	16	15	44	44	40	18	44	44	40	40
	PGZF080	40	50	45	120	120	110	50	120	120	110	110
	PGZF120	80	110	120	260	260	230	120	260	260	230	230
Rotor Inertia ( gcm <sup>2</sup> )	PGZF060	246	189	152	186	175	175	175	186	175	175	175
	PGZF080	1189	869	730	859	809	809	809	859	809	809	809
	PGZF120	5750	3350	2540	3280	2840	2840	2840	3260	2840	2840	2840
Backlash ( arc min )	PGZF060	<30			<35				<40			
	PGZF080	<25			<30				<35			
	PGZF120	<15			<20				<25			
Weight ( Kg )	PGZF060	1.5			2.5				2.5			
	PGZF080	4.5			6.5				6.3			
	PGZF120	10			13				12			
Max Radial Load/ Max Axial Load	PGZF060	1.7										
	PGZF080	4.4										
	PGZF120	12.0										
Torsional Stiffness	PGZF060	340 N / 450 N										
	PGZF080	650 N / 900 N										
	PGZF120	1500 N / 2100 N										
Noise	PGZF060	65 dB(A)										
	PGZF080	68 dB(A)										
	PGZF120	70 dB(A)										
Max Speed/ Recommended Speed	PGZF060	13000 rpm / 3000 rpm										
	PGZF080	7000 rpm / 3000 rpm										
	PGZF120	6500 pm / 3000 rpm										

## Mechanical Dimension

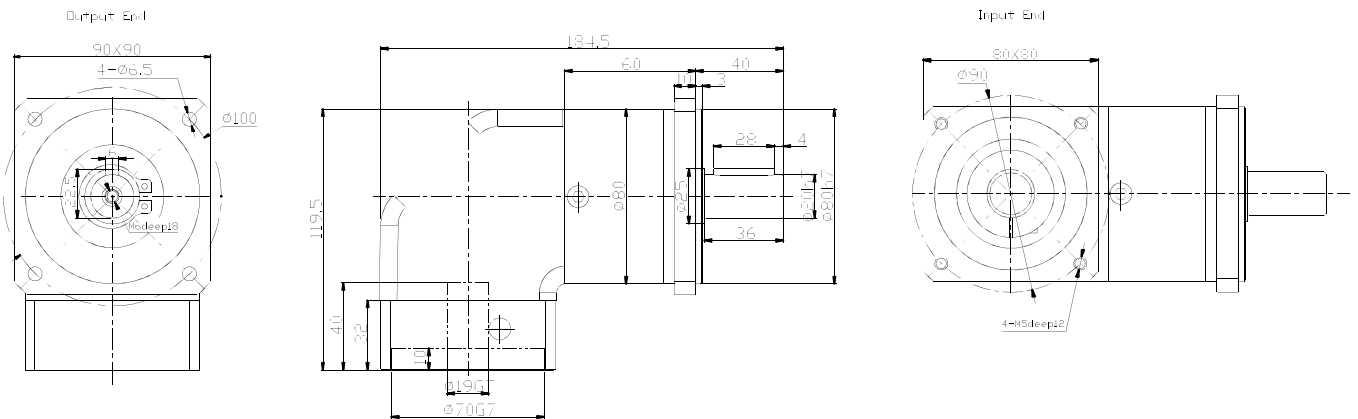


Gearbox Model	PGZF060			PGZF080			PGZF120		
No. of Stage	1	2	3	1	2	3	1	2	3
L1 Overall Length	150	169.5	182	184.5	212	229.5	249.2	286.5	314
L3 Body Length	46.5	59.5	72	60	78	95.5	73.7	101.5	129
L12 Overall Height	93			119.5			167.5		
<b>Output</b>									
L4 Output Shaft Length	35			40			55		
L5 Output Length to Shaft Shoulder	30.5			36			50		
L6 Key Length	25			28			40		
L7 Key Length to Shaft End	2.5			4			5		
L8 Spigot Length	3			3			4		
L11 Flange Thickness	8			10			15		
D4 Output Shaft Diameter	Ø14 h7			Ø20 h7			Ø25 h7		
D5 Shaft Shoulder Diameter	Ø17			Ø25			Ø35		
D6 Spigot Diameter	Ø50			Ø80			Ø110		
D7 Gearbox Section	□60			□90			□120		
D8 Mounting Hole Distribution Circle	Ø70			Ø100			Ø130		
D9 Flange Mounting Hole	Ø5.5			Ø6.5			Ø8.5		
B1 Key Width	5			6			8		
H1 Key Height	16			22.5			28		
G3 Center Screw Hole	M5x15			M6x18			M10x22		
<b>Input</b>									
L2 Input Flange Length	20			32			40		
L9 Motor Shaft Length	30			40			55		
L10 Spigot Depth	5			10			8		
D1 Mounting Hole Distribution Circle	Ø70			Ø90			Ø145		
D2 Spigot Diameter	Ø50 h7			Ø70 h7			Ø110 h7		
D3 Input Shaft Diameter	Ø14 h7			Ø19 h7			Ø22 h7		
G1 Mounting Screw Hole x Depth	M4x12			M5x12			M8x22		
Q3 Input Flange	□60			□80			□130		

**PGZF060-R3/R5/R10:**



**PGZF080-R3/R5/R10:**



**PGZF120-R3/R5/R10:**

